



# Constructive Mentoring State Forum

## 'Work and Life: From Burnout to Balance'

### Event Programme

**3.45 – 4.00pm Registration**

**4.00 – 4.45pm Guest Speaker: Dr Elizabeth Farrelly**

Elizabeth shares her experiences and survival tactics as a woman in the industry and public eye.

**4.45 – 5.45pm Workshop: Financial Life Planning**

Representatives from Superwoman Financial Solutions will educate you on how every aspect of your life can impact your wealth creation or wealth protection process, and will help develop a strategic plan to take you from where you are now to where you want to be.

**5.45 – 6.00pm Break**

**6.00 – 6.30pm Guest Speaker: Joanne Cys**

Joanne discusses the issue of work / life balance as a woman in the construction & design industry.

**6.30 - 7.00pm Networking**

Meet and chat with others in the building, design & construction industry over casual drinks and nibbles.

### EVENT DETAILS

#### When?

Wed 3<sup>rd</sup> September  
4.00 – 7.00pm

#### Where?

RAIA  
100 Flinders Street  
Adelaide SA

#### What?

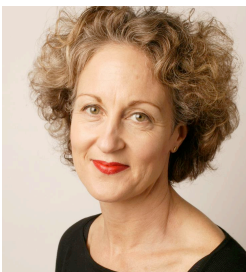
Inspirational guest speakers and fun interactive workshops followed by drinks & informal networking.

#### How do I register?

Email Lisa Bollard at [lisa@orijen.com.au](mailto:lisa@orijen.com.au) by Monday 1<sup>st</sup> September.

### Your Guest Speakers

#### Dr Elizabeth Farrelly



Award-winning author and regular columnist for the Sydney Morning Herald; also a trained architect. Her latest book *Blubberland: The Dangers Of Happiness* was published in 2007. Elizabeth lives in Sydney with her partner and 2 children.

#### Joanne Cys



Senior Lecturer and Program Director of Interior Architecture at the University of South Australia. She is the National President Elect of the Design Institute of Australia (DIA) and is Australia's representative to the Global Design Network and the Asia Pacific Space Designers Association. Joanne has published widely on contemporary interior design and has been an invited speaker at numerous international design conferences.

Peak Industry Partners:



Project managed by:



Supported by:

*This project is proudly supported by*



An Australian Government Initiative  
**AusIndustry**

*This is an Australian Government funded service under the Building Entrepreneurship in Small Business Program.*